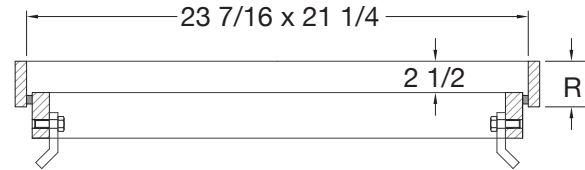
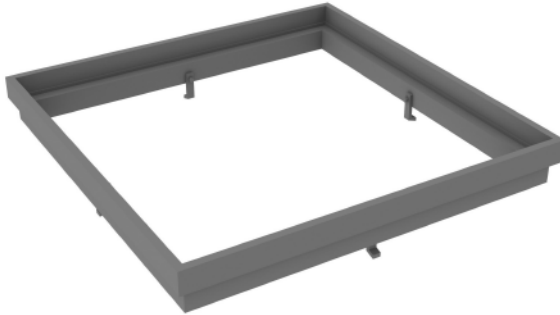


Fixed



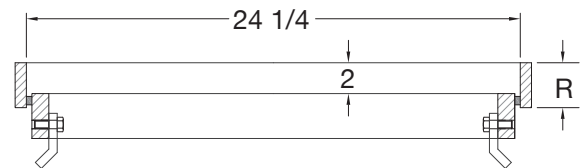
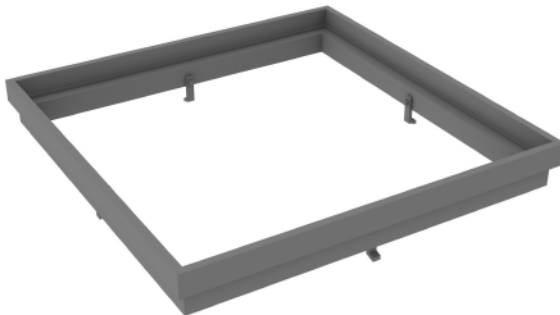
NOTES:

- Dimensions are approximate & in inches
- Steel
- Conforms to ASTM A36 specifications

RAISE

PRODUCT NO.	R
22310	1
22315	1-1/2
22320	2

Fixed



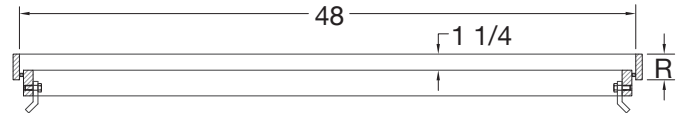
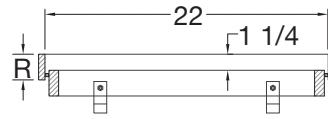
NOTES:

- Dimensions are approximate & in inches
- Steel
- Conforms to ASTM A36 specifications

RAISE

PRODUCT NO.	R
22410	1
22415	1-1/2
22420	2
22425	2-1/2
22430	3



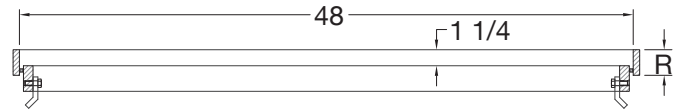
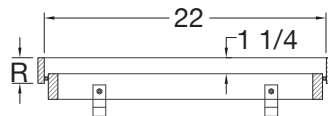


**NOTES:**

- Dimensions are approximate & in inches
- Steel
- Conforms to ASTM A36 specifications

RAISE

PRODUCT NO.	R
23405-10	1
23405-15	1-1/2
23405-20	2



**NOTES:**

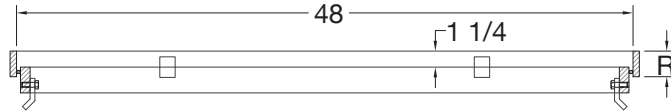
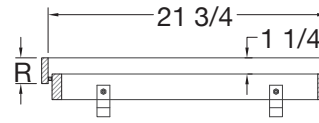
- Dimensions are approximate & in inches
- Steel
- Conforms to ASTM A36 specifications

RAISE

PRODUCT NO.	R
23408-10	1
23408-15	1-1/2
23408-20	2



Fixed



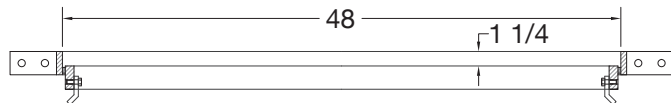
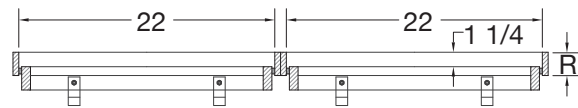
NOTES:

- Dimensions are approximate & in inches
- Steel
- Conforms to ASTM A36 specifications

RAISE

PRODUCT NO.	R
22617-10	1
22617-15	1-1/2
22617-20	2

Fixed



NOTES:

- Dimensions are approximate & in inches
- Steel
- Conforms to ASTM A36 specifications

RAISE

PRODUCT NO.	R
23425-10	1
23425-15	1-1/2
23425-20	2

