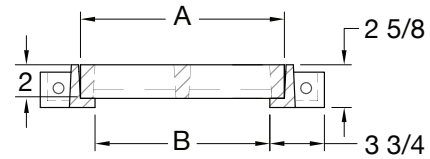
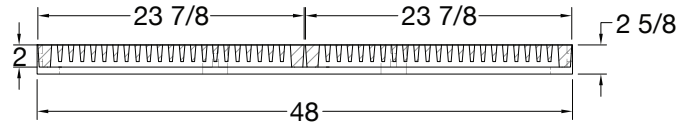


PRODUCT NO.	GRATE DIMENSION	CLEAR OPENING
	A	B
21224	12	9-3/4
21424	14	11-3/4
22024	20	17-3/4
22424	24	21-3/4
22624	26	23-3/4

NOTES:

- Dimensions are approximate & in inches
- Gray Iron, Class 30B
- Conforms to ASTM A48 / A48M-03 specifications
- * Please specify if required in Class 35B or Ductile Iron





PRODUCT NO.	GRATE DIMENSION		CLEAR OPENING
	A	B	
21229	12		9-3/4
21429	14		11-3/4
22029	20		17-3/4
22429	24		21-3/4
22629	26		23-3/4

NOTES:

- Dimensions are approximate & in inches
- Gray Iron, Class 30B
- Conforms to ASTM A48 / A48M-03 specifications
- * Please specify if required in Class 35B or Ductile Iron

